

Internal Use Only

Jousing Medical Co., Ltd.

Hotline: 400-820-9952  
E-mail: service@jousing.com  
www.jousing.com



AED First-aid  
Map Applet



Follow Jousing  
on WeChat

**JOUSING**  
— 久心医疗 —



A Pioneer Domestic Brand  
Powered by Low-energy  
Defibrillation Technology

iAED-S1  
The First Certified AED in China

Jousing Medical Co., Ltd.



- Compact size & Light weight
- Ultra-simple interface
- Chinese/English Mode



- Efficient low-energy defibrillation
- Accurate heart rhythm identification
- Rapid 7-second charging
- Child/Adult Mode



- Intuitive buttons
- Voice and graphic interaction
- Real-time positioning and recording
- Large storage capacity



- AED smart management system
- Linked to emergency medical centers
- Integrating AEDs deployed in public places



## Advanced Technology

### Low-energy Defibrillation Technology

The advanced low-energy biphasic truncated exponential (BTE) waveform defibrillation technology results in less myocardial damage and higher defibrillation efficiency. According to research, current is a major factor behind successful defibrillation, but too high energy can cause myocardial damage. [1] Low-energy ( $\leq 200\text{J}$ ) biphasic waveform technology has been demonstrated to result in more effective defibrillation than monophasic waveform with the same or higher energy. [2] A shock with high current and low energy (150J) can considerably reduce the amount of current which passes through a heart resulting in less myocardial damage and higher first-time defibrillation success rate.

### Accurate Heart Rhythm Identification

The device has leading heart rhythm identification and analysis accuracy thanks to a sample database accumulated over 20 years. The device has passed rigorous military tests, demonstrating excellent water and dust resistance and anti-drop protection, and it is applicable in extremely cold and high-altitude environments, and complies with ambulance transportation standards.

Sources:  
[1] Tanabe, Seizan et al. "Comparison of outcomes after use of biphasic or monophasic defibrillators among out-of-hospital cardiac arrest patients: a nationwide population-based observational study." Circulation. Cardiovascular quality and outcomes vol. 5,5 (2012): 689-96.  
[2] Setting a standard in external defibrillation: Low energy biphasic waveforms



## Intelligent and Easy-to-Use

### Real-time Recording When Switched On (With JOUlink)

Built-in sound filter chip with high fidelity  
Automatic noise filtering to ensure recording quality  
Configurable recording length of up to 60 minutes  
Traceable rescue operation location

### Real-time Positioning When Switched On (With JOUlink)

Equipped with dual sensor monitoring, the device automatically activates location positioning when switched on, flexibly matching GPS, Beidou satellite system or a base station in real time. The exact rescue time and device location are recorded and can be checked at any time, and a trace map can be generated for each device. An "Electric Fence" can be set to protect the AED from being taken out of the designated area by immediately triggering an alarm.

### Large Storage Capacity and Flexible Data Transmission (With JOUlink)

The 16G large storage capacity (which can be expanded) can ensure reliable storage of millions of event records and hundreds of hours of recording data, which can be downloaded wirelessly from a remote site.



## Smart Management

### Smart Management System

JOUnet, a leading AED management system developed by Jousing, uses Huawei Cloud, cloud computing and 4G/5G technology to monitor and manage AED device data, which forms a closed link in AED usage in terms of location, time, personnel and emergency response and integrates AEDs deployed in public places to empower pre-hospital emergency care.



#### One-stop Device Management

Real-time monitoring of AEDs and accessories  
Quick retrieval of rescue data and audio records  
Precise location positioning using various methods  
High compatibility with other AED brands and platforms



#### Refined Personnel Management

Customized authorization for administrators  
Effective management of first-aid volunteers



#### Scenario-based Solutions

One-click emergency response in public places  
Real-time tracing during sports events  
Flexibly meeting corporate and individual demands



#### Linked to Emergency Medical Centers

Integrating AEDs deployed in public places  
Linked to local emergency medical centers  
Monitoring AED status at any time during treatment  
AED rescue data can be easily retrieved



## AED First-aid Map Applet

The JOUnet-based emergency response WeChat applet – AED First-aid Map – has ingeniously linked publicly deployed AEDs and emergency medical volunteers, visualizing the status of these AEDs and helping locate them via any navigation app. Through a simple click on the applet, anyone can call for emergency medical help, whereby trained volunteers will rush to the scene as soon as possible.

### Find AEDs Nearby



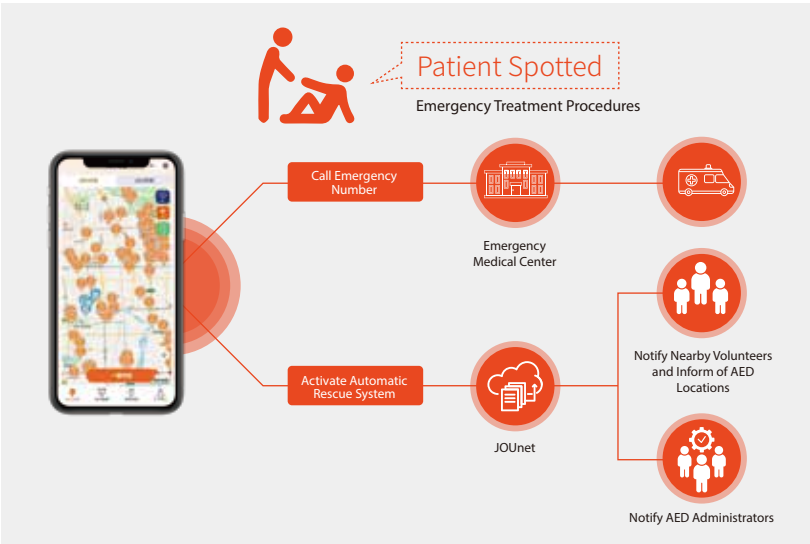
### One-Click-For-Help

- 01

Open the WeChat applet “AED First-aid Map”
- 02

Click “Call for Help”
- 03

Call for emergency medical services or activate the automatic rescue system



## Product Features

- Low-energy, high-current biphasic waveform technology
- Up to 200J
- Remote wire
- less data transmission
- Annotated ECG
- Event log, self-test data, etc.
- Equipped with CPR prompts according to AHA guidelines
- Standby time: ≥ 5 years
- Drop resistance: 1.22 m
- Ingress protection: IP54
- Operating temperature: -20°C~+50°C
- Storage and transport temperature: -30°C~+65°C

### Standard Accessories



### Optional Accessories



## Customer Service Support

### Service Network

Jousing has established a strategic partnership with Lenovo to provide timely customer support.  
A complete service network covering Chinese cities of all levels| 2,400+ service centers| 10,000+ service technicians| Rapid response within 2 hours| Solution delivery within 4 hours| On-the-spot service within 48 hours

### Standardized Deployment Support

Jousing provides whole-process customer support and standardized services covering everything from product delivery to installation, and follows up on customer satisfaction and feedback.

### Integrated Tracing Services

Featuring integrated remote monitoring, automated notifications and human support, the system can trace deployment, conduct regular assessments and provide optimization suggestions.